

Soft Focus®

WOMAN WITHIN®
INTRODUCES

EUROPEAN COLLECTION
SIZES 14W TO 40W

hello
style!

we've been
waiting for you

8/19/22 5:12:34 PM - simoned
Name: 000743568FW22_6244_O_FRONT_DTX_0238
Extend to Fill Box

save
up to

\$X0

get ready!
a new fashion
adventure is
about to begin

CALL 24/7 • 1-800-248-2000 • SOFTFOCUS.US



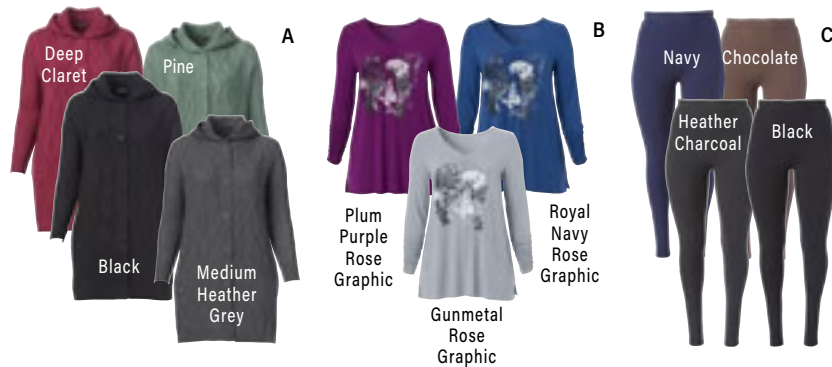
ATTACHED HOOD

save
\$30

A
Medium Heather
Grey
B
Gunmetal
Rose
Graphic
C
Black

B
Gunmetal
Rose
Graphic
RUCHED SLEEVE & NECKLINE

BOOTS
SEE ONLINE
15689



2 SOFTFOCUS.US

Welcome to

Soft Focus

Your ticket to European style is here. Scouring through the best fashions from abroad, we bring you beautifully detailed designs, sized to fit with reassuring comfort. Unique, chic, effortless and modern. Join us on a new fashion journey.

- A. HOODED CABLE CARDIGAN**
56-43620-0634 5-button closure. Side seam pockets. Cable detail. 34" length. Acrylic. M-4X \$89.99 **\$59.99**
- B. RUCHED SLEEVE TUNIC**
7-43562-0634 Straight hem with side slits. Ruching detail at bust and sleeve. Screen print detail. 30" length. Rayon/spandex. M-4X \$59.99 **\$39.99**
- C. LEGGING**
25-43946-0634 Flat elasticized waistband. Ankle length. 28" inseam. Cotton/spandex. M-5X \$44.99 **\$29.99**
- D. KNIT CARDIGAN WITH LEATHER TRIM**
56-43945-0634 Open front. Straight hem. Faux leather trim and tie belt. 30" length. Acrylic. M-4X \$109.99 **\$74.99**
- E. SATIN LACE TANK**
30-43563-0634 Scallop laced v-neckline. Adjustable cami straps. A-line silhouette. 30" length. Satin poly. 14W-34W \$44.99 **\$29.99**
- F. FAUX WRAP SKIRT**
25-43951-0634 Stylish ruching and pintuck detail make all the difference. Elastic waistband. 28" length. Poly/spandex. M-4X \$59.99 **\$39.99**

All machine washable. Imported.



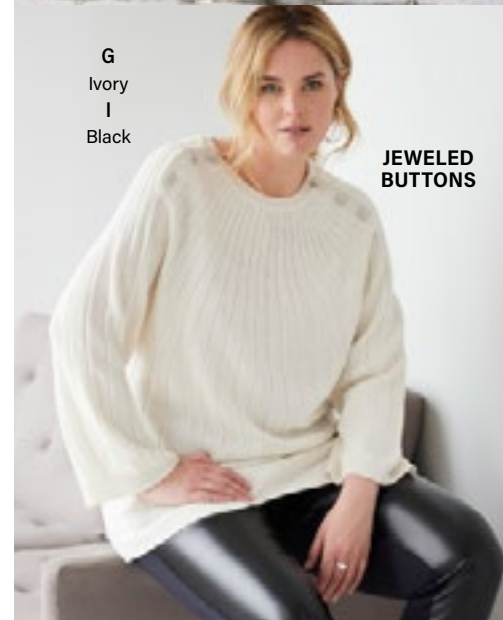
SWEATER HAS LEATHER LOOK BELT & TRIM

8/19/22 3:38:25 PM - simoned
Name: 005643945FW22_1106_O_FRONT_BKEQ_0035
Extend to Fill Box

save
\$35

G
Ivory
I
Black

JEWELLED BUTTONS



to see more of the Soft Focus European Collection, visit softfocus.us

BERET
SEE ONLINE
19481

SHIMMER SHARK BITE HEM SWEATER

G. PULLOVER SWEATER WITH BUTTON ACCENTS
56-43942-0634 Three quarter sleeves. A-line silhouette. Button accents at shoulder. Burst stitch detail. 26" length. Acrylic. M-4X \$84.99 **\$59.99**

H. SHARK BITE PULLOVER TUNIC SWEATER
56-43944-0634 Scoop neckline. Shark bite hem. 32" length. Shimmer knit polyester/metallic/spandex. M-4X \$89.99 **\$59.99**

I. LEATHER LOOK PONTE PANT
25-43947-0634 Pull on style. Ponte waistband and back. Two side seam pockets. 28" inseam. Poly. M-4X \$84.99 **\$59.99**

KNIT PONTE BACK & KNIT WAITBAND
BOOTS
SEE ONLINE
15223

new!
Soft Focus
european collection
14W-40W

talking
details

Have fun wearing beautifully crafted pieces with pops of color. Every stitch of it is simply eye-catching. Stylishly **unique** to say the least, like you!



A
Black
Rose
Embroidery



BERET
SEE ONLINE
19481

C
Black
Paisley
Border

save
\$XX

POCKETS

BOOTS
SEE ONLINE
23541



B
Classic
Red

**SHIMMER
SHARKBITE**



A

Black Rose
Embroidery

Deep
Teal Rose
Embroidery



B

Gunmetal

Classic
Red

Black



E

Navy

Heather
Charcoal

Chocolate

Black

A. EMBROIDERED SWEATSHIRT

7-43568-0634
Scoop neckline. Rib trim at neckline, cuffs and hem. Side slits. 28" length. Cotton/poly. M-4X
~~\$84.99~~ **\$59.99**

B. SHARK BITE PULLOVER TUNIC SWEATER

0056-43944-0634
Relaxed fit. Scoop neckline. Long sleeves. Shark bite hem. 32" length. Lurex knit polyester/metallic/spandex. M-4X
~~\$00.00~~ **\$00.00**

C. RUFFLE SLEEVE DRESS

5-43961-0634
Three quarter ruffled cuff sleeves. Side seam pockets. Pintuck detail. 50" length. Poly/rayon/jersey. M-4X
~~\$89.99~~ **\$59.99**



D
Black Multi
Border Print
E
Black

**REMOVABLE
HOOD**

save
\$90

Gloves
See Online
17649



D
Black
Multi
Border
Print



F
Black
Stamp Floral
E
Black

D. MULTICOLOR COAT

29-44205-0634
Stand collar with removable hood. Double breast button-front closure. Polyester taffeta lining. 38" length. Wool dooby blend. 14W-34W ~~\$239.99~~ **\$149.99**

E. LEGGING

25-43946-0634
Flat elasticized waistband. Ankle length. 28" inseam. Cotton/spandex. M-5X ~~\$44.99~~ **\$29.99**

F. ASYMMETRIC TUNIC

7-43560-0634
Scoop neckline. Long sleeves. Front has asymmetrical seams. 34" length. Rayon/spandex. M-4X ~~\$74.99~~ **\$49.99**

All machine washable. Imported.

new!
Soft Focus
european collection
14W-40W

A. LONG PINTUCK TUNIC

30-43519-0634 Button-front placket. Long sleeves convert to three-quarter length. Front pintucking. Side slits. 42" length. Cotton/spandex poplin. 14W-34W \$79.99 **\$54.99**

B. PONTE WIDE-LEG PANT

25-43949-0634 Flat front with zip fly and button closure. Back elastic waistband. Wide leg with side slits. Welt pockets. Poly/rayon/spandex Ponte. M-4X \$59.99 **\$39.99**

C. PONTE TROUSER PANT

25-43948-0634 Flat front with zip fly and button closure. Back elastic waistband. Back welt pockets. Ankle length tapered leg. 28" inseam. Ponte poly/rayon/spandex. M-4X \$59.99 **\$39.99**

D. FUR TRIM CARDIGAN

56-43939-0634 Single front closure. Long sleeves with faux fur trim cuffs. Straight hem. 33" length. Acrylic. M-4X \$109.99 **\$74.99**

E. SATIN LACE TANK

30-43563-0634 Scallop laced V-neckline. Adjustable cami straps. A-line silhouette. 30" length. Satin poly. 14W-34W \$44.99 **\$29.99**

F. STRAIGHT-LEG JEAN

31-43955-0634 Five-pocket styling. Signature pocket stitching. 30" inseam. Cotton/poly/rayon/spandex. 14W-34W \$89.99 **\$59.99**

G. EMBROIDERED HENLEY TUNIC

30-43522-0634 Henley placket. Three-quarter length button-cuff sleeves. A-line silhouette. 32" length. Georgette poly. 14W-34W \$89.99 **\$59.99**

H. KNIT DRESS

5-44200-0634 Scoop neckline with printed appliqué. Sharkbite hem. 46" length. Poly/rayon knit. M-4X \$84.99 **\$59.99**

save
\$25

chic
styles with classic
touches like faux fur trim
and artful embroidery.

A
Ivory
B
Black

D
Black
Geo
E
Ivory
F
Indigo

H
Black
Bouquet
Print

FUR
TRIM
SLEEVES

G
Black
Floral
Embroidery
F
Indigo

All machine washable. Imported.

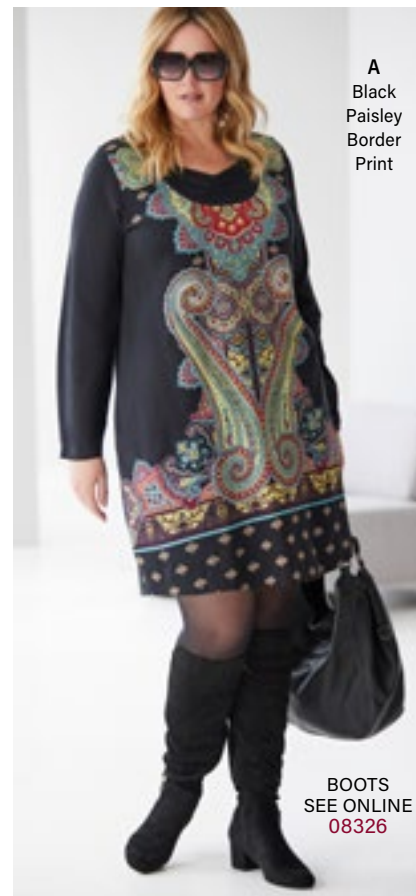


SHOE
SEE ONLINE
42834



want more? check out the entire collection @ softfocus.us 800-248-2000

new!
Soft Focus
european collection
14W-40W



A
Black
Paisley
Border
Print



B
Black
Medallion
Embroidery



C
Black
D
Indigo

save
\$50

**A. SCARF PRINT
LAYERED LOOK
KNIT DRESS**

5-43962-0634 Ruched neckline. Side pockets. 39" length. Poly/rayon. M-4X ~~\$89.99~~ **\$59.99**

**B. EMBROIDERED
BIB KNIT DRESS**

5-44061-0634 Notch neckline. Empire seam. Side pockets. 50" length. Poly/rayon. M-4X ~~\$89.99~~ **\$59.99**

C. MOTO JACKET

32-44055-0634 Faux leather. Zip detail. Quilted front and sleeves. 30" length. Poly. 14W-34W ~~\$149.99~~ **\$99.99**

**D. BABY BELL
BOTTOM JEAN**

31-43957-0634 Five-pocket styling. Flared hem. Signature pocket stitching. 31" inseam. Cotton/poly/rayon/spandex. 14W-34W ~~\$89.99~~ **\$59.99**

**E. RUFFLE
THREE-QUARTER
SLEEVE TUNIC**

30-43543-0634 Scoop neckline with embroidery detail. Shirred ruffles on sleeves and hem. 32" length. Georgette poly. 14W-34W ~~\$89.99~~ **\$59.99**

**F. SHEARLING
VEST**

32-43997-0634 Faux shearling. Open front. Side pockets. 32" length. Poly. M-4X ~~\$174.99~~ **\$124.99**

**G. RUCHED
TURTLENECK TEE**

7-43571-0634 Straight hem. 28" length. Rayon/spandex. M-5X ~~\$49.99~~ **\$34.99**

**H. STRAIGHT-LEG
JEAN**

31-43955-0634 Five-pocket styling. 30" inseam. Cotton/poly/rayon/spandex. 14W-34W ~~\$89.99~~ **\$59.99**



D
Indigo

All machine washable. Imported.

hello
modern vintage, paisley prints, shearling trims,
bell bottom jeans. It all feels oh-so fun, feminine and fashionable.


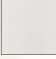
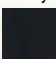


E
Black
Multi
Flower
Embroidery



G
Medium
Heather
Grey

**RUCHED NECK &
SLEEVE**

- G**  Medium Heather Grey
-  Ivory
-  Black

Trouser
Pant,
see
page 6



D
Midnight
Sanded

Indigo

H
Midnight
Sanded

Indigo



F
Black
G
Medium
Heather
Grey
H
Black

HAT
SEE ONLINE
37424

Trouser
Pant,
see
page 6

like what you see? discover more styles at softfocus.us

new!

european collection 14W-40W

totally
unique go-to warbrobe staples that
 have that special something. Just like you!



A
 Indigo
 Paisley
 Flowers



C
 Pine
 Ditsy
 Floral



B
 Pine
 C
 Pine Ditsy
 Floral

CROCHET/
 RIBBON
 TRIM
 WAIST

save
\$20



A
 Midnight

10 SOFTFOCUS.US

All machine washable. Imported.

BOOTS
 SEE ONLINE
 29639

A. DENIM DRESS
 5-44090-0634 Henley button
 placket. Faux breast pock-
 ets. Three quarter button cuff
 sleeves. 44" length. Cotton/
 poly/spandex. 14W-34W
 Midnight \$109.99 **\$69.99**
 Indigo Paisley Flowers
 \$114.99 **\$74.99**

**B. HOODED CABLE
 CARDIGAN**
 56-43620-0634 See page
 2 for details. M-4X
 \$89.99 **\$59.99**

**C. PRINTED MAXI
 DRESS**
 5-44058-0634
 Button front. Elbow length
 sleeves. Hidden side zipper.
 Side seam pockets. Velvet
 crochet and shirring detail
 on waist. 53" length. Rayon.
 14W-34W \$109.99 **\$79.99**

**D. BUTTON-FRONT
 SHIRT**
 30-43548-0634
 Shirt collar. Button cuffed long
 sleeves. Front and back ruch-
 ing. High/low shirt tail hem. 37"
 length. Cotton/spandex poplin.
 14W-34W \$59.99 **\$39.99**

**E. BABY BELL
 BOTTOM JEAN**
 31-43957-0634
 See page 8 for details.
 14W-34W \$89.99 **\$59.99**

**F. RUCHED
 TURTLENECK TEE**
 7-43571-0634 Straight hem.
 Ruched detail. 28" length.
 Rayon/spandex. M-5X
 \$49.99 **\$34.99**

G. WOOL COAT
 29-44078-0634 Detachable faux
 fur collar. Button-front with mock
 horn buttons. Welt pockets.
 Self-fabric tie belt. 44" length.
 Tweed wool blend. 14W-34W
 \$239.99 **\$149.99**

**H. STRAIGHT-LEG
 JEAN** 31-43955-0634
 See page 8 for details. 14W-34W
 \$89.99 **\$59.99**



D
 Deep
 Claret
 E
 Indigo

save
\$90



B Black Medium Heather Grey
 D Deep Claret Ivory Navy
 E Midnight Sanded Indigo
 F Black Ivory Medium Heather Grey
 H Midnight Sanded Indigo



PU WEB POSE
 & CLONE

F
 Ivory

G
 Chocolate/
 Soft Camel
 H
 Indigo

THIS BKGD HAS EXTENSION
 ON TOP AND BOTTOM

new!
Soft Focus
 european collection 14W-40W

even more styles and looks await you! find it all at softfocus.us

Soft Focus

Discover the new collection 24/7 at **softfocus.us** 1-800-248-2000

A
Plum
Purple



8/10/22 12:31:14 PM - bandera
Name: 005643715FW22_1031_O_FRONT_
SCEQ_0039
CC to: <Plum Purple>
Rename: 005643715FW22_1004_C_TOP_PPQE

A
Pumpkin
B
Indigo



8/10/22 12:36:00 PM - bandera
Name: 005643715FW22_1031_O_FRONT_
SCEQ_0011
CC to: <Pumpkin>
Rename: 005643715FW22_1014_C_TOP_PUQE
Lighten Area behind type and near foot

save
\$20

A. COWL NECK SWEATER WITH BUTTON ACCENTS

56-43715-0634 Ribbed cowl neck. Flared slit open bracelet length sleeves. Side hem button detail. 30" length. Acrylic. M-4X
~~\$84.99~~ **\$59.99**

B. BABY BELL BOTTOM JEAN

31-43957-0634
See page 8 for details.
14W-34W ~~\$89.99~~ **\$59.99**

the
effortless look

All it takes is the right sweater and jeans to pull it all together.

A
Camel



A
Heather
Charcoal



8/19/22 5:17:10 PM - simoned
Name: 005643715FW22_1031_O_FRONT_SCEQ_0068
QUAD Posa & Glorie Request has been submitted.
HEATHER CHARCOAL



B
Midnight
Sanded