



HAVEN HARBOR

By Madeline Khare
Art by Jacob Saucedo

LOGLINE

Identical humans Saras and Ash swap places in order to solve each other's problems, but their problems only escalate instead!

THEMES

There are eight billion individual people on planet earth. Each person is unique, and many have similarities. But how did YOU become YOU? Was it innate or learned? Haven Harbor explores the idea that in a multitude of universes, you could have become anyone. Perhaps if you studied more, you would be a lawyer. Or if you simply befriended the wrong person, you would become a criminal.

Knowing that you could become anyone, who will you decide to be?

AUDIENCE & TONE

Haven Harbor is a 6-11, 22 min, serialized, dystopian sci-fi. Tonally, it's a character-focused coming of age comedy which reveals a larger plot over time. Think: *The Parent Trap* meets *The Truman Show*. Similar audiences include *Avatar: The Last Airbender*, *She-Ra*, and *The Hunger Games*.

SETTING

Haven Harbor is a clean, densely populated city like Washington DC with technology similar to present day. There are two high schools - Harbor Preparatory and Harbor Public. Harbor Prep is a private school with a well-groomed campus, award winning staff, and the most elite students. On the other hand, Harbor Public has students who are... street smart.

SARAS (She/Her, 15)

Saras is extraverted, kooky, and curious. She's more brawn than brain, and barely scrapes by in school at Harbor Public. Her moral compass is a few degrees off - she cares more about people than systems. For example, when she sees someone about to be hit by a car, she pushes them out of the way. But when she has to pass a test or she'll miss prom... she's not above cheating. And she does exactly that when she meets her identical twin named...



ASH (She/Her, 15)

Ash is type-A, a little too serious, and loves planning. But no amount of planning could have prepared Ash for when an identical copy of herself pushes her out of harm from oncoming traffic. Ash lives by a strict moral code, she leaves no debts unpaid - even if it means she has to stoop to their level. When Saras saves Ash's life, she feels it's only fair to take Saras's bio exam for her.

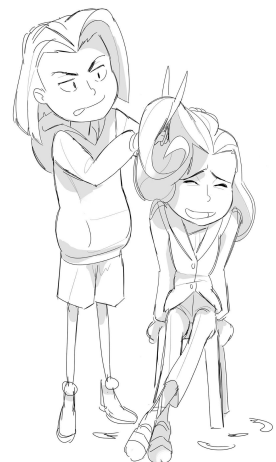


BENNIE (He/Him, 15)

Bennie is Saras' best friend. He's extroverted, goofy, and keeps things fun. (Think: Sokka from ATLA.)

MS. PRISCILLA (She/her, Late 40's)

Ms. Priscilla is the mean ole biology teacher that nobody likes. She's strict, she's sassy, and everyone is way too afraid to cross her. She suspects there are two of Saras after studying her late husband's adventure journals. But she can't seem to prove it. Her one mission is to prove there are two of them, and two Haven Harbors, at all costs! (Think: Mr. Crocker from Fairly Odd Parents.)



THE CONTROLLER (Anonymous)

The Controller is the mysterious mastermind behind all of the Haven Harbors. Their job is to ensure all of the cities in “The Control Group” are as similar as possible. If one city differs too much, it’s the Controller’s job to eliminate it.

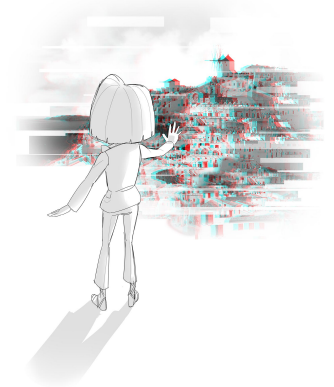
SEASON 1 OVERVIEW

At first, Ash and Saras will have one goal: Don’t Get Caught! They will need to work together to pull off the swap so Saras can cheat her way through high school, and Ash can be a star athlete for her college admissions.



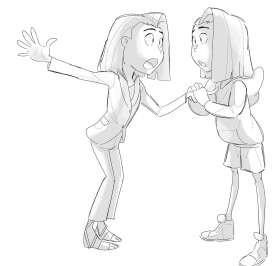
Each episode will feature the characters using each other to solve each other’s problems, until they begin to uncover secrets the city has kept for ages.

Saras will question everything when she finds out she’s not the only person who’s been swapping places with their identical counterparts. Ash will inevitably find Ms. Priscilla’s theories too intriguing to ignore. They will both need answers, and set off on an illegal journey to find the other Haven Harbor.



BEYOND SEASON 1

Saras will discover the real reason there are multiple Haven Harbors: they’re part of a massive experiment studying the butterfly effect. Entire cities are cloned, and some are placed in control groups, which are maintained by moles using subliminal mind control to ensure people make identical choices across the study. Others are placed in experimental groups, which can be eliminated at the drop of a pin if The Controller decides the data isn’t in his favor.



Ash and Saras must explore more Haven Harbors to form a group of misfit heroes and save their cities from further experimentation, or destruction, all while balancing their tween love lives and schoolwork.

SPRINGBOARD EXAMPLES

Pilot: When Saras rescues identical human Ash from danger, she suggests they swap places so she doesn't fail her biology final. It's an idea so bad it just might work - so long as Ms. Priscilla doesn't catch them!

Episode 2: Ash's parents pressure her to join the soccer team, so she swaps places with Saras to appease them. Things become complicated when Saras twists her ankle and Ash has to play the championship game herself!

Episode 3: Saras is cast in the school play, but she has a kiss scene with her crush, Pat! She's too nervous to do the scene, so she enlists Ash's help. Only, Ash instantly falls for Pat too and the two must compete for Pat's attention!

ABOUT MADELINE KHARE

As a biracial woman I am committed to telling authentic, diverse stories. As the daughter of an immigrant and person of color who grew up in the south, I have a unique perspective on how American society works. My goal as a writer is to propose solutions to systemic and psychological issues to inspire change.



Madeline Khare

madelinechandrakhare@gmail.com

(318)423-7752